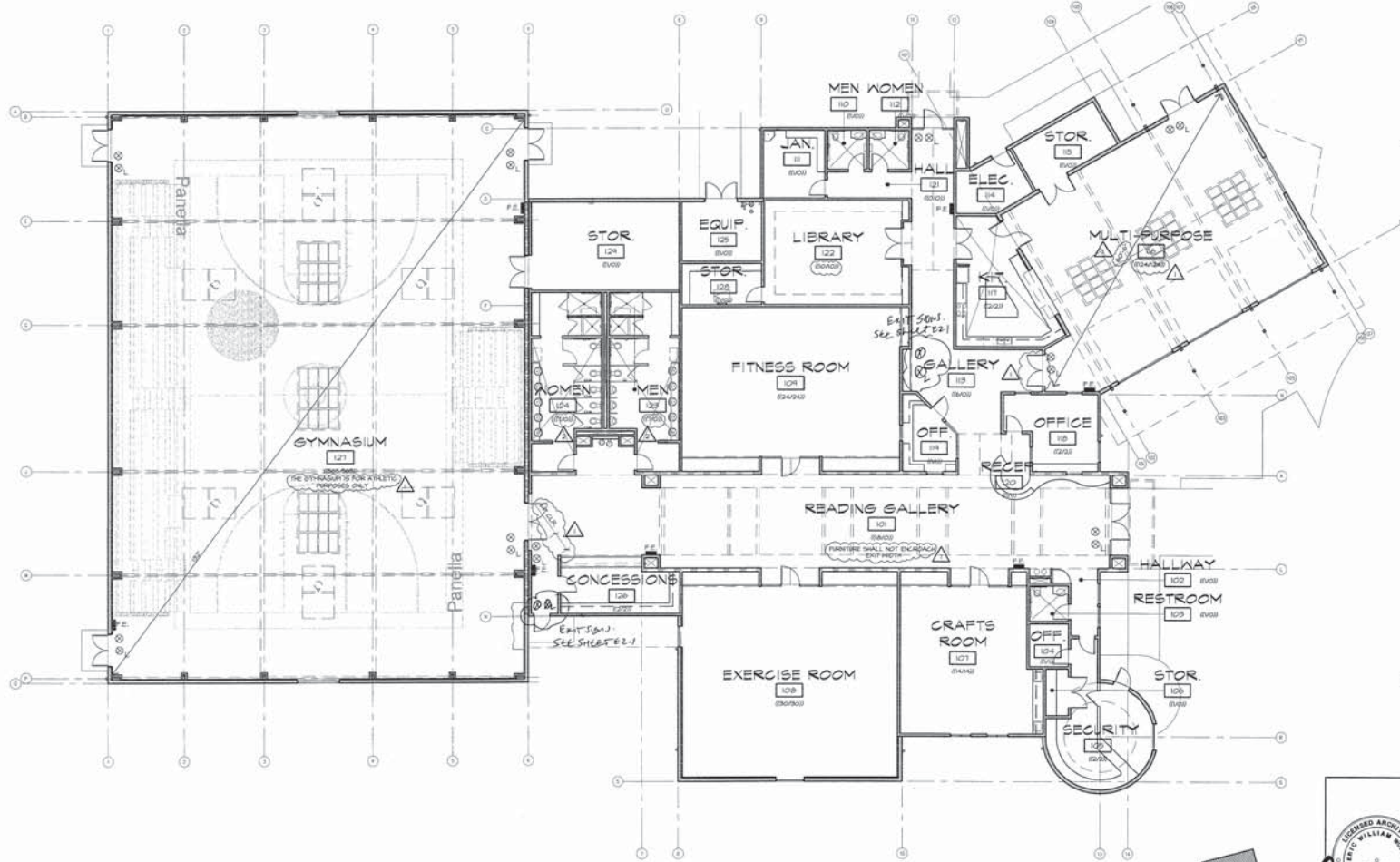


Arnold Rue Community Center



LEGEND

(XXXXXX) ROOM OCCUPANT LOAD / CONTRIBUTING OCC. LOAD TO EXIT SCHEME

FIRE EXTINGUISHER IN RECESSED HALL CABINET - REFER TO DETAIL VARIOUS

BATTERY BACK-UP ILLUMINATED EXIT SIGN @ T-0' TO CENTER A.F.P. - REFER TO LIGHTING PLAN.

BATTERY BACK-UP LOW LEVEL ILLUMINATED EXIT SIGN - REFER TO LIGHTING PLAN.

- GENERAL NOTES**
- FURNISH AND INSTALL ROOM CAPACITY SIGNAGE. AT ALL ASSEMBLY ROOMS, SIGN SHALL BE OF DURABLE CONSTRUCTION AND CONTRASTING IN COLOR FROM THE BACKGROUND ONTO WHICH IT IS ATTACHED. SIGN SHALL READ "MAXIMUM ROOM CAPACITY SIGN". REFER TO NOTED ROOM OCCUPANT LOAD (THIS DRAWING) FOR CAPACITY VALUES TO BE NOTED ON SIGNAGE.
 - FIRE EXTINGUISHER LOCATIONS SHALL BE APPROVED BY THE FIRE DEPARTMENT PRIOR TO INSTALLATION.
 - TOTAL OCCUPANT LOAD: (620) CONTRIBUTING TO EXIT SCHEME: (110)

EXIT PLAN

SCALE: 1" = 10'-0"

Lesovsky Donaldson Architects, LLP
MEMBER AMERICAN INSTITUTE OF ARCHITECTS
4 South Central Express Street, CA 95204 TEL 209 943-0405 FAX 209 943-0413

These documents are the property of Lesovsky Donaldson Architects, and are not to be produced, stored or copied without the expressed written consent of Lesovsky Donaldson Architects.

PANELLA-COMMUNITY CENTER

EXIT PLAN

DEPARTMENT OF PARKS & RECREATION
CITY OF STOCKTON

REV. NO.	DESCRIPTION	DATE	BY	APPROV.
1	PLAN CHECK	10.21.01	CL	
2	PLAN CHECK	10.18.01	GL	

SCALE: 1" = 10'-0"

DRAWN BY: CL
CHECKED BY: EW
RECORD DWG: 15.01.2007

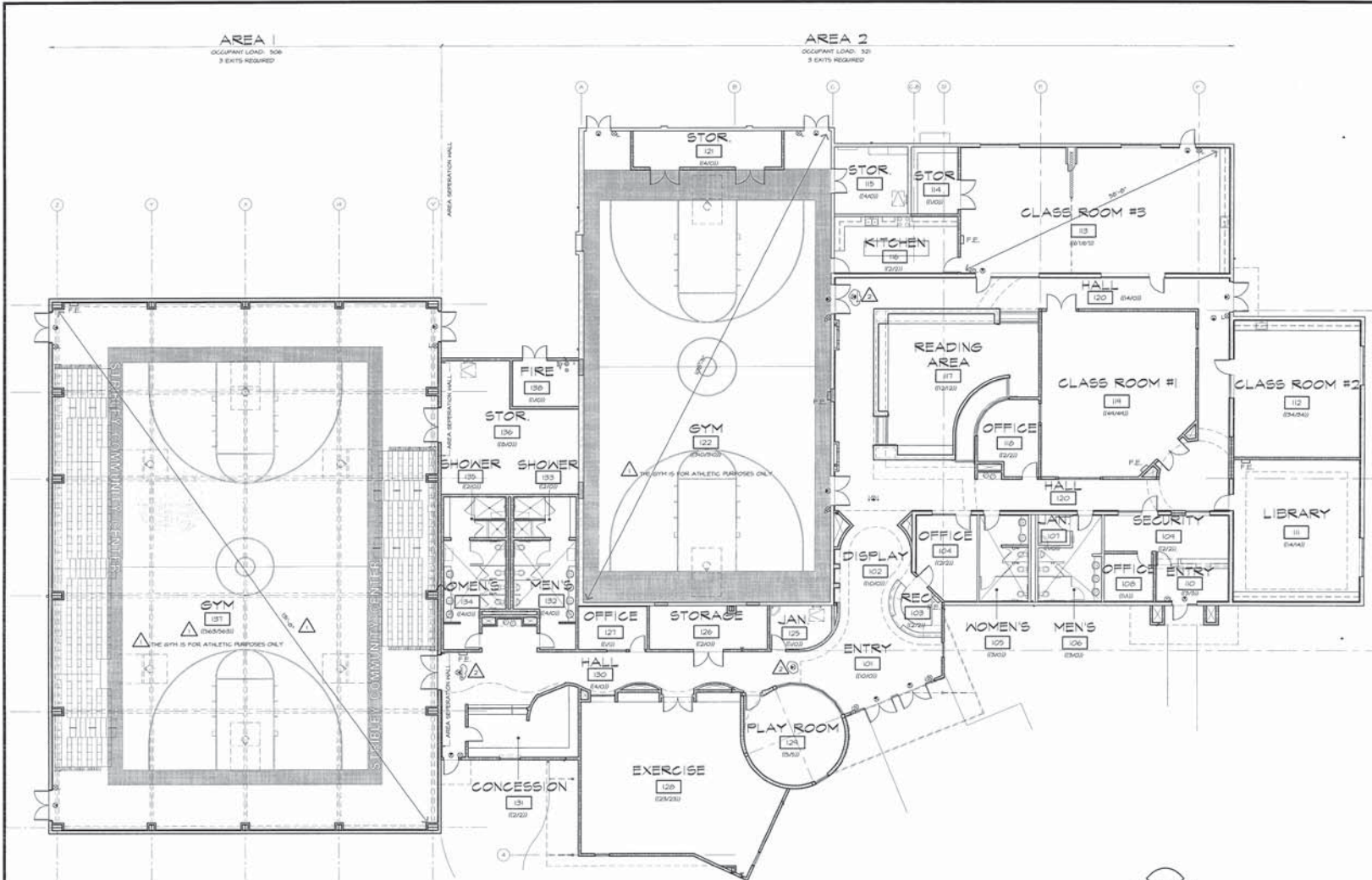
PARKS FACILITY PLANNER
STOCKTON, CALIFORNIA

A0.1

OF SHEETS

PROJECT NO. **XX-XX-XX**

Stribley Community Center



LEGEND

(XXXXXX) ROOM OCCUPANT LOAD / CONTRIBUTING OCC. LOAD TO EXIT SCHEME

FE FIRE EXTINGUISHER IN RECESSED WALL CABINET - REFER TO DETAIL 1A10.2

⊗ BATTERY BACK-UP ILLUMINATED EXIT SIGN @ T-8" TO CENTER A.F.F. - REFER TO SHEET ESJ LIGHTING PLAN

⊗ BATTERY BACK-UP LOW LEVEL ILLUMINATED EXIT SIGN - REFER TO SHEET ESJ LIGHTING PLAN

- GENERAL NOTES**
- FURNISH AND INSTALL ROOM CAPACITY SIGNAGE. AT ALL ASSEMBLY ROOMS, SIGN SHALL BE OF DURABLE CONSTRUCTION AND CONTRASTING IN COLOR FROM THE BACKGROUND ONTO WHICH IT IS ATTACHED. SIGN SHALL READ "MAXIMUM ROOM CAPACITY XXXX". REFER TO NOTED ROOM OCCUPANT LOAD THIS DRAWING FOR CAPACITY VALUES TO BE NOTED ON SIGNAGE.
 - FIRE EXTINGUISHER LOCATIONS SHALL BE APPROVED BY THE FIRE DEPARTMENT PRIOR TO INSTALLATION.

EXIT PLAN
BUILDING IS DIVIDED BY AREA SEPERATION WALL



Lesovsky-Donaldson Architects
MEMBER AMERICAN INSTITUTE OF ARCHITECTS
4 South Central Court Stockton, California 209-943-0425



These documents are the property of the Lesovsky/Donaldson Architects, and any part of them to be produced, changed or copied without the expressed written consent of Lesovsky/Donaldson Architects.

STRIBLEY PARK COMMUNITY CENTER
1780 E. BONORA STREET, STOCKTON, CA

ENTERING PLAN

DEPARTMENT OF PARKS AND RECREATION
CITY OF STOCKTON

REV. NO.	DESCRIPTION	DATE	BY	APPROVED BY:
1	PLAN CHECK	10.25.07	CL	
2	PLAN CHECK	11.14.07	CL	

SCALE: _____

DESIGNED BY: _____

DRAWN BY: _____

CHECKED BY: EW

RECORD DWG: 11.14.2007

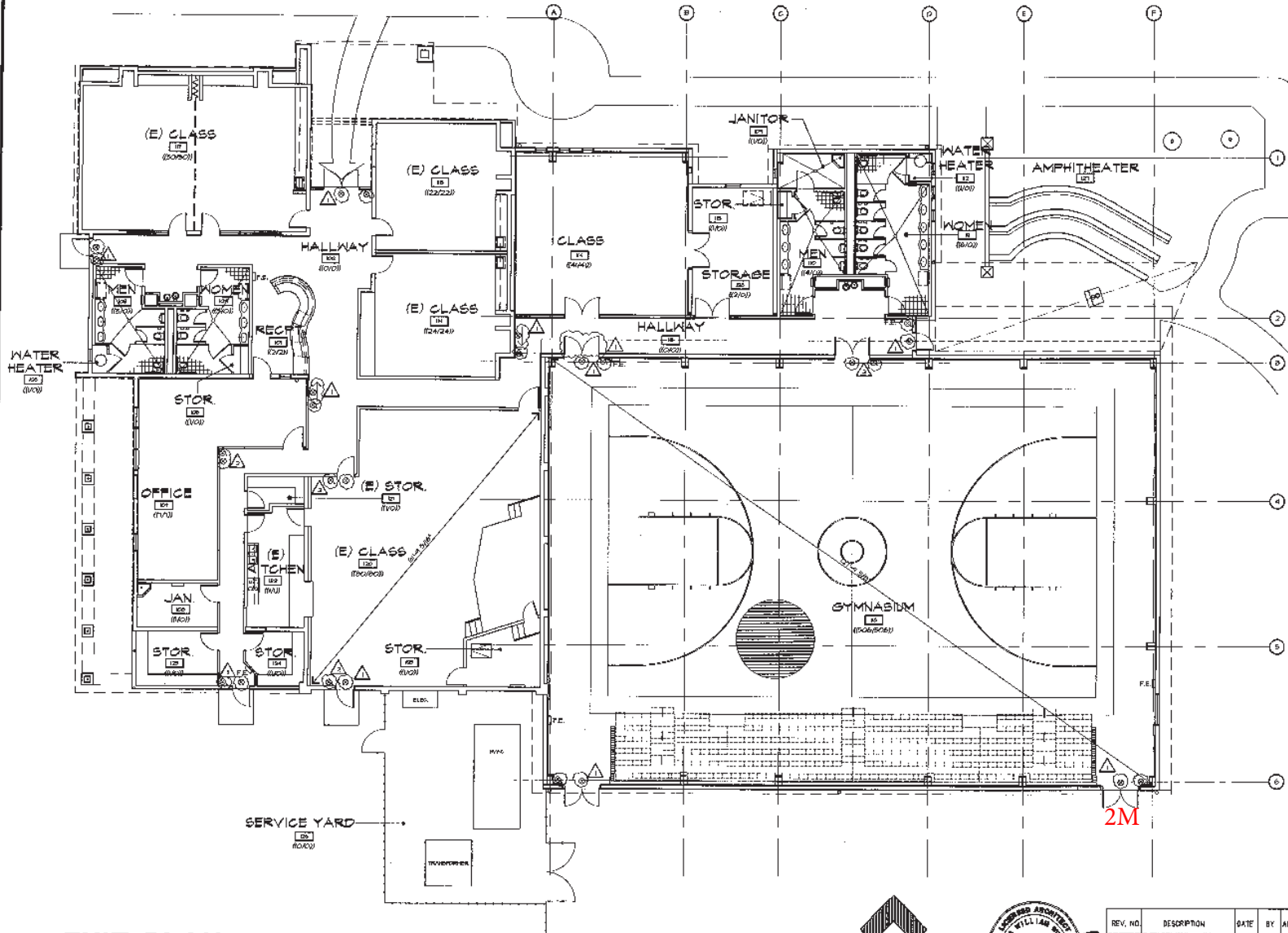
APPROVED BY: DATE: _____

SHEET NO. **A0.1**

OF SHEETS _____

PROJECT NO. **000-00**

Van Buskirk Community Center



LEGEND

(RXX/00) ROOM OCCUPANT LOAD / CONTRIBUTING OCC. LOAD TO EXIT SCHEME

FE FIRE EXTINGUISHER IN RECESSED WALL CABINET - REFER TO DETAIL SHOWN

⊙ BATTERY BACK-UP ILLUMINATED EXIT SIGN 1'-6" TO CENTER AFF. REFER TO SHEET E21 LIGHTING PLAN

⊙ BATTERY BACK-UP LOW LEVEL ILLUMINATED EXIT SIGN - REFER TO SHEET E21 LIGHTING PLAN

- GENERAL NOTES**
1. FINISH AND INSTALL ROOM CAPACITY SIGNAGE AT ALL ASSEMBLY ROOMS. SIGN SHALL BE OF DURABLE CONSTRUCTION AND CONTRASTING IN COLOR FROM THE BACKGROUND ONTO WHICH IT IS ATTACHED. SIGN SHALL READ "MAXIMUM ROOM CAPACITY XXX". REFER TO NOTED ROOM OCCUPANT LOAD (TNS DRAWING FOR CAPACITY VALUES TO BE NOTED ON FINISHING.
 2. FIRE EXTINGUISHER LOCATIONS SHALL BE APPROVED BY THE FIRE DEPARTMENT PRIOR TO INSTALLATION.
 3. TOTAL OCCUPANT LOAD: 750
OCCUPANT LOAD CONTRIBUTING TO EXIT SCHEME: 135

Lesovsky Donaldson Architects, LLP
 ARCHITECTS REGISTERED PROFESSIONAL ENGINEERS
 4000 Geary Court, Redwood, CA 94061 TEL 925 845-0428 FAX 925 845-0415

**VAN BUSKIRK COMMUNITY CENTER
 GYMNASIUM ADDITION & RENOVATION
 EXIT PLAN**

DEPARTMENT OF PARKS AND RECREATION
CITY OF STOCKTON

REV. NO.	DESCRIPTION	DATE	BY	APPROV.
1	BACK CHECK			
2	BACK CHECK			

SCALE: 1/4"=1'-0"

DESIGNED BY: EW
 DRAWN BY:
 CHECKED BY: EW
 RECORD DWG: 05 APR 2005

APPROVED BY: DATE: 1-26-06

SHEET NO. **A0.1**
 2 OF 00 SHEETS
 PUR 06-008

4000 Geary Court, Redwood, CA 94061
 ARCHITECTS REGISTERED PROFESSIONAL ENGINEERS
 STOCKTON, CALIFORNIA

EXIT PLAN



4790-1C